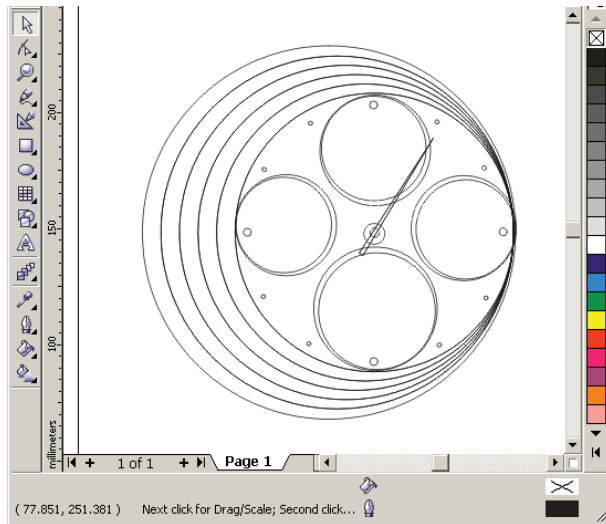


Rendering 1 of 2

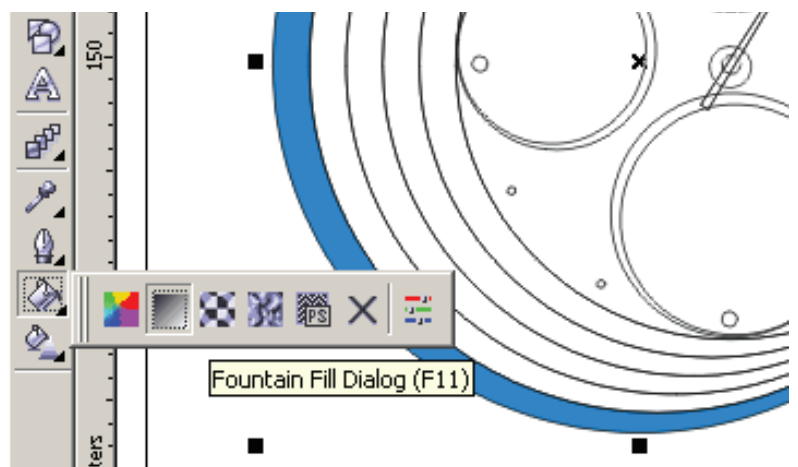
Step 1 >>

Using the arrow click on the part of the drawing you wish to render. Then click on the colour you wish it to be from the colour panel on the right.



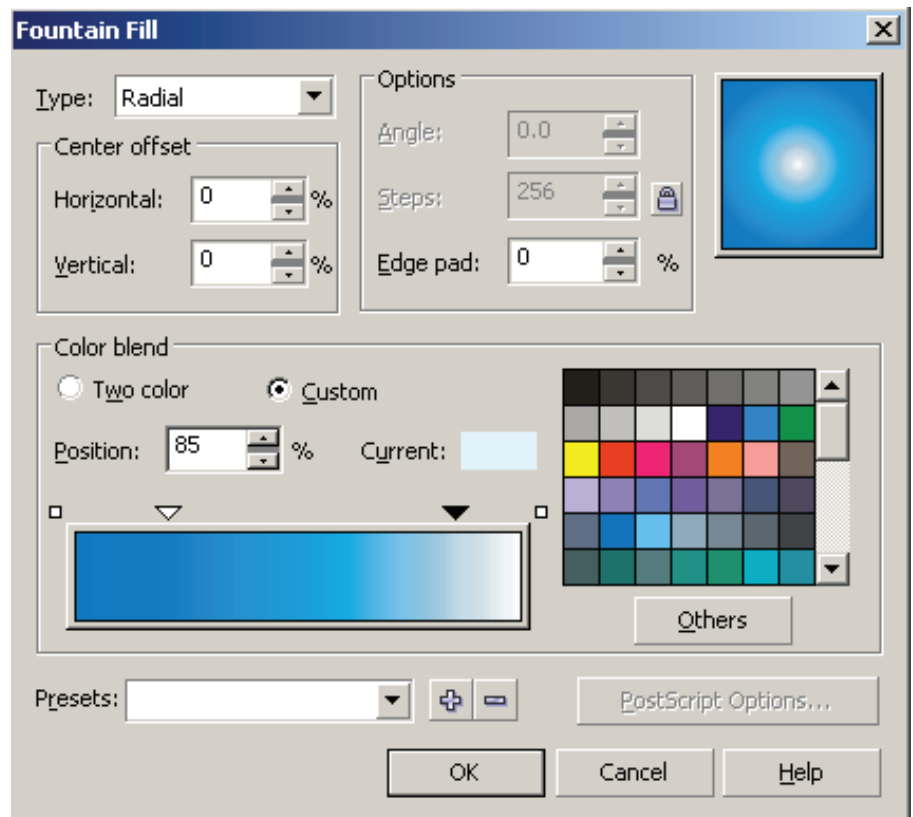
Step 2 >>

Next click on the fill tool then click on the fountain fill tool. The fountain fill window will then open.



Step 3 >>

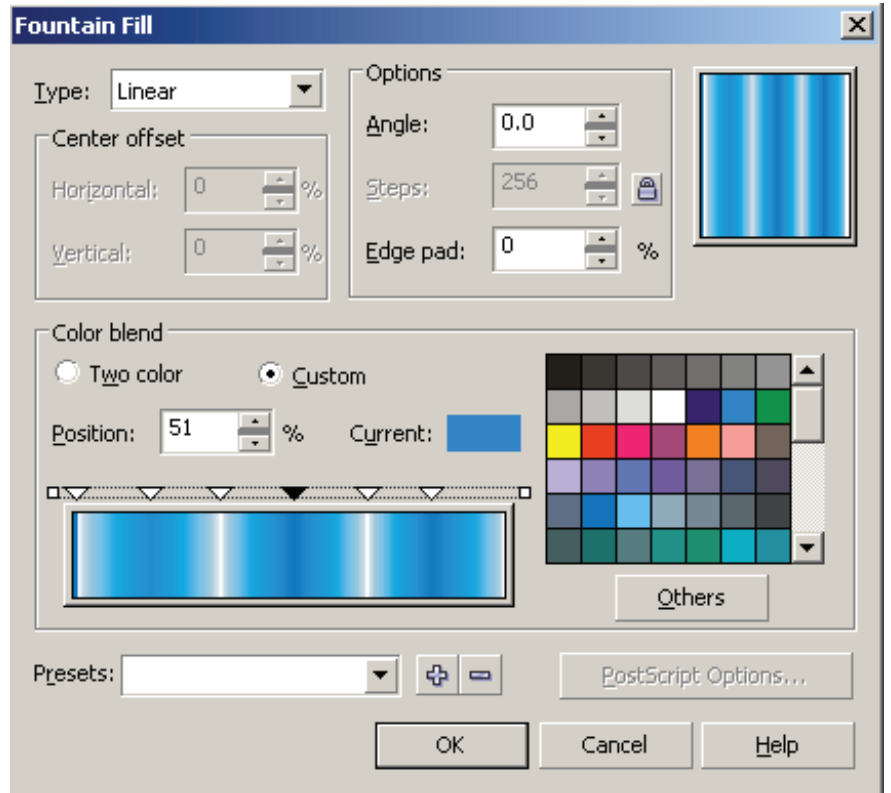
Now click on the custom button and a custom colour bar will appear. Now click on an arrow then pick a colour and the bar will change. Double click anywhere on the bar to add a new colour. You can also drag an arrow this helps you blend the colour. Note: you can choose a radial blend or a linear blend under type at the top.



Rendering 2 of 2

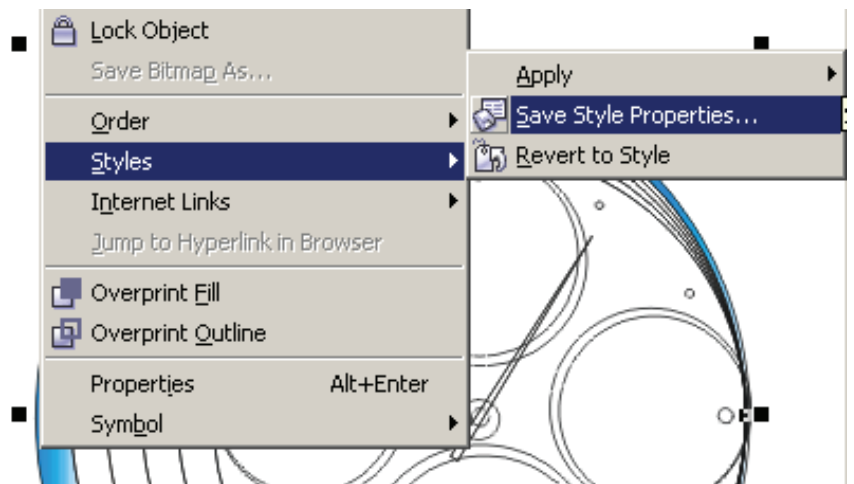
Step 4 >>

Here you can see i have added several blends to make up my render. Once done press the ok button to apply it to your drawing.



Step 5 >>

Right click on your rendered shape, then select styles and choose the save style properties option and enter a name for your style i called mine blue1. Now right click on an un-rendered shape and choose styles, then choose apply and pick the styles name you just saved. This will add the same style to the other shape.



Step 6 >>

Now create more styles and add them to your shapes. Also try the other render options from the fill tool menu try pattern and the texture options.

