

Popper man construction instructions (Sheet 1 of 3)

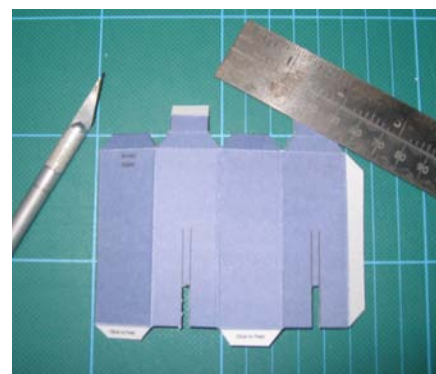
Step 1 - Draw your face, hair, hands and feet onto your popper man.

Step 2 - Now add your clothes, jewelry and any extra designs. Note: Colour the inner and outer tubes the same colour as the feet and the long arm panels. Colour the inner tubes top square the same colour as the hair.

Step 3 - Using scissors or a scalpel now cut out all your popper man pieces.

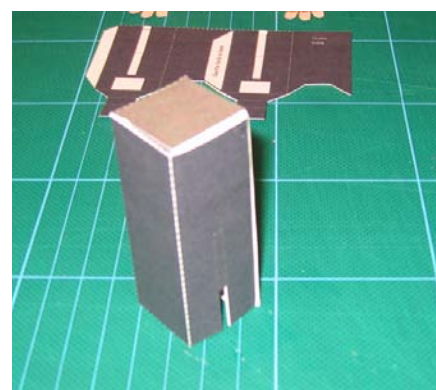


Step 4 - Next lightly score over all the dotted lines. This breaks the card and allows you to fold it with ease when you start construction.



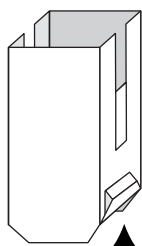
Step 5 - Now create your inner tube. Fold all the pieces back and use PVA to glue together.

Tip: Use small bits of clear sticky tape to hold your pieces together while the glue is drying.



Step 6 - Now create your outer tube. Fold all the pieces back and use PVA to glue together.

Tip: The extra panels fold back on themselves and glue to the side. This creates a thicker piece of card that creates extra protection against the elastic band later.

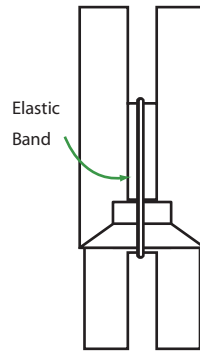


Fold back



Popper man construction instructions (Sheet 2 of 3)

Step 7 - Add your elastic band. Make sure the mechanism works by testing it now. You might tighten your elastic band or tweak it so it works better.

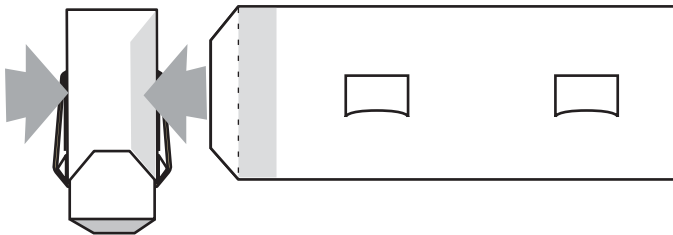


Step 8 - Add the main body panel. Glue the panel to the outer tube. I used some sticky tape to make sure it stayed.

Tip: Ensure the semi circles point down towards the slot in the inner tube.



Step 9 - Glue the main body panel back on itself like so.



Step 10 - Score your hands lightly and fold all the sections.

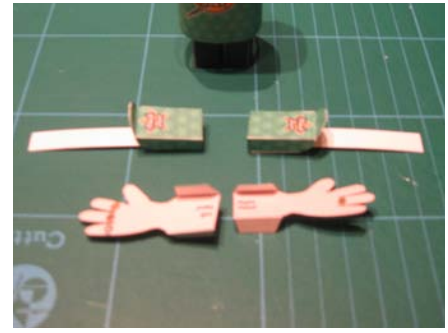


Step 11 - Fold your sections back and glue them like so.

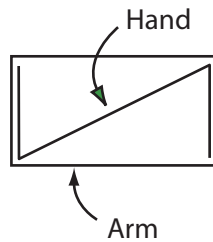


Popper man construction instructions (Sheet 3 of 3)

Step 12 - Now fold your hands. Fold them back on themselves like so.



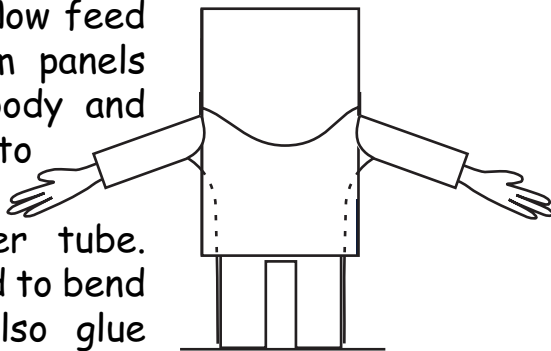
Step 13 - Now glue your folded hands inside the arms like so.



Step 14 - Now glue on your head and feet. Again use a bit of sticky tape to keep the head in place while it dries.



Step 15 - Now feed the long arm panels inside the body and glue them onto the bottom of the outer tube. You may need to bend them and also glue them to your feet.



Tip: Wait until your popper is dry until you test it otherwise you might damage it!